



The Youth Center

presents

CAMP S.H.A.R.K.

Science - Hands on - Art - Recreation - Knowledge

PARENT ORIENTATION





HALEY KAMOLA

Camp Director



VALERIE TERAN

Camp Director



LINA LUMME

Executive Director

CAMP DATES:
JUNE 8TH -
AUGUST 7TH

HOURS

BASIC 9:00 AM - 4:00 PM

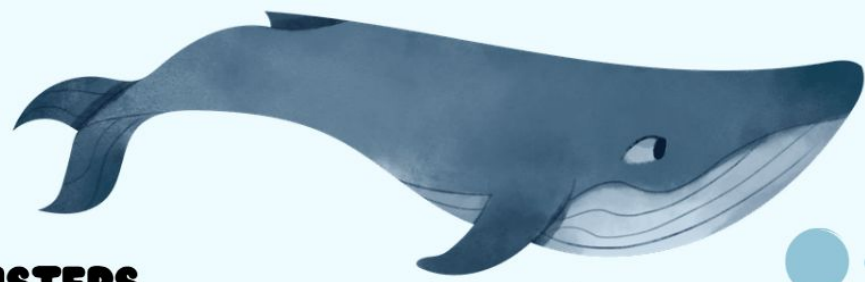
EXTENDED 7:00 AM - 7:00 PM

10:1
KID TO STAFF
RATIOS

AGES 5 - 12



OPTIONAL WEEKLY BUS FIELD TRIPS



CABRILLO AQUARIUM

JOHN'S INCREDIBLE PIZZA

OC DISCOVERY CUBE

KNOTT'S BERRY FARM

STARLIGHT LAKEWOOD CINEMA

EL DORADO NATURE CENTER

DAVE & BUSTERS

GET AIR - HUNTINGTON BEACH

SEAL BEACH

TANAKA FARMS

ADVENTURE CITY

KIDS EMPIRE INDOOR PLAYGROUND

GOLF N' STUFF

MOTHER'S BEACH

PARK SPLASH PAD

URBAN AIR TRAMPOLINE PARK

ROUND 1 BOWLING

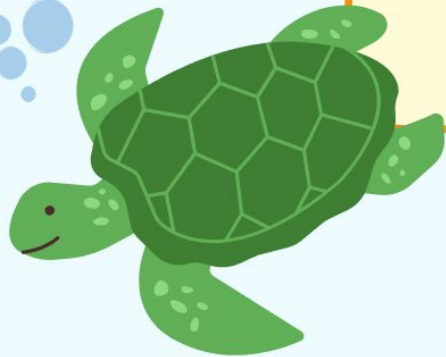
OCC PLANETARIUM



OPTIONAL WALKING FIELD TRIPS

**IN N OUT
STARBUCKS
THE HABIT
PAUL'S PLACE
EGGBRED
ISLANDS
MAMA'S**

**JERSEY MIKES
WENDY'S
MCDONALDS
ANGELINAS
JACK IN THE BOX
CPK
POLLY'S PIES
PANERA**

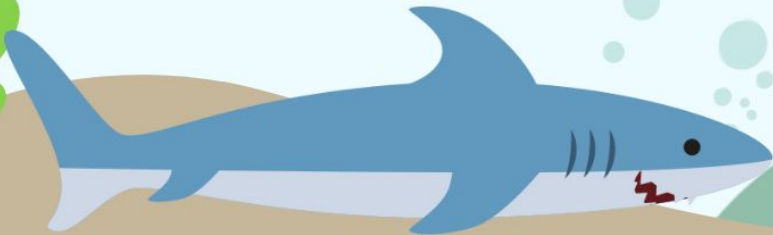


ADD ON CLASSES

**MONDAY..... SCIENCE &
ART**

**WEDNESDAY..... COOKING &
PERFORMING ARTS**

FRIDAY..... SPORTS



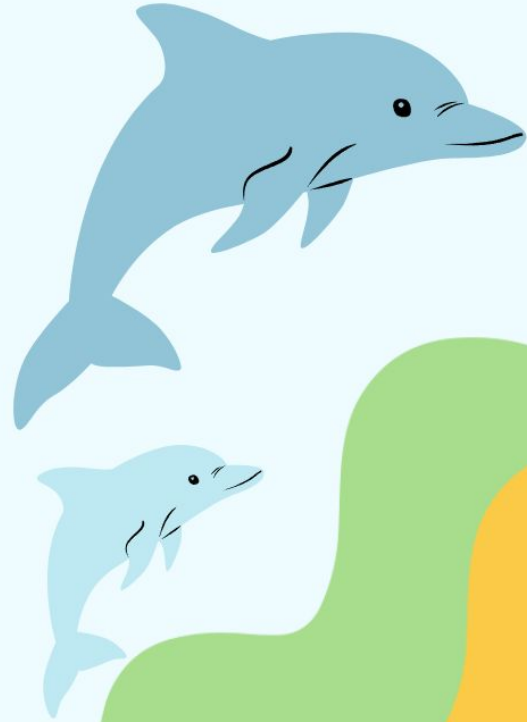
GAMES, ARTS & CRAFTS

THREE ACTIVITIES PER HOUR:

**CRAFTS
STEM
DODGEBALL
LANYARDS
RELAY RACES
PLAYGROUND
AND MORE!**

EQUIPMENT AVAILABLE:

**BASKETBALLS
JUMP ROPE
FOOTBALLS
VOLLEYBALLS
HULA HOOPS
HAND BALLS
AND MORE!**



WATER ACTIVITIES

**DIFFERENT INTERACTIVE
WATER GAMES**

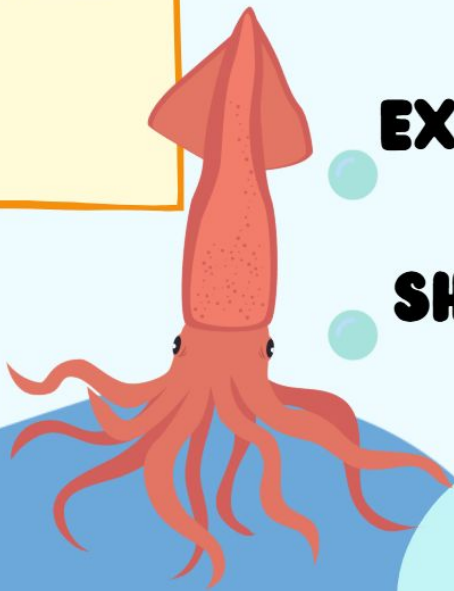


WHAT TO BRING:

BATHING SUIT

EXTRA CHANGE OF CLOTHES

SHOES THAT CAN GET WET



SPECIAL THEME MONDAYS

WE HIGHLY ENCOURAGE EVERYONE TO PARTICIPATE!

JUNE 8TH: WEAR BLUE (SHARK WEEK)

JUNE 15TH: CRAZY SOCK DAY (ADVENTURE WEEK)

JUNE 22ND: WEAR ANIMAL PRINT (ANIMAL WEEK)

JUNE 29TH: HAWAIIAN SHIRT DAY (TROPICAL WEEK)

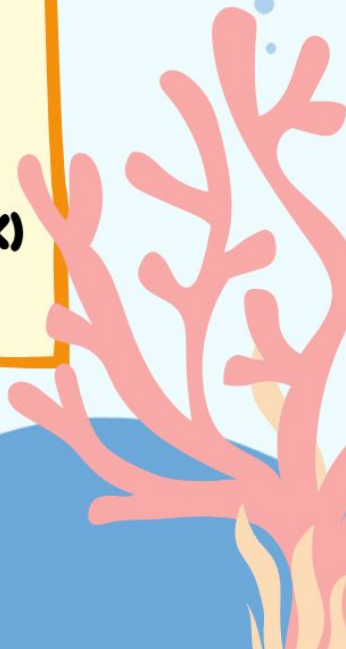
JULY 6TH: DRESS LIKE A SUPERHERO (SUPERHERO WEEK)

JULY 13TH: DRESS LIKE A PIRATE OR MERMAID (OCEAN WEEK)

JULY 20TH: DRESS LIKE AN ALIEN (SPACE WEEK)

JULY 27TH: DRESS LIKE A MOVIE CHARACTER (HOLLYWOOD WEEK)

AUGUST 3RD: WEAR CAMOUFLAGE (NATURE WEEK)

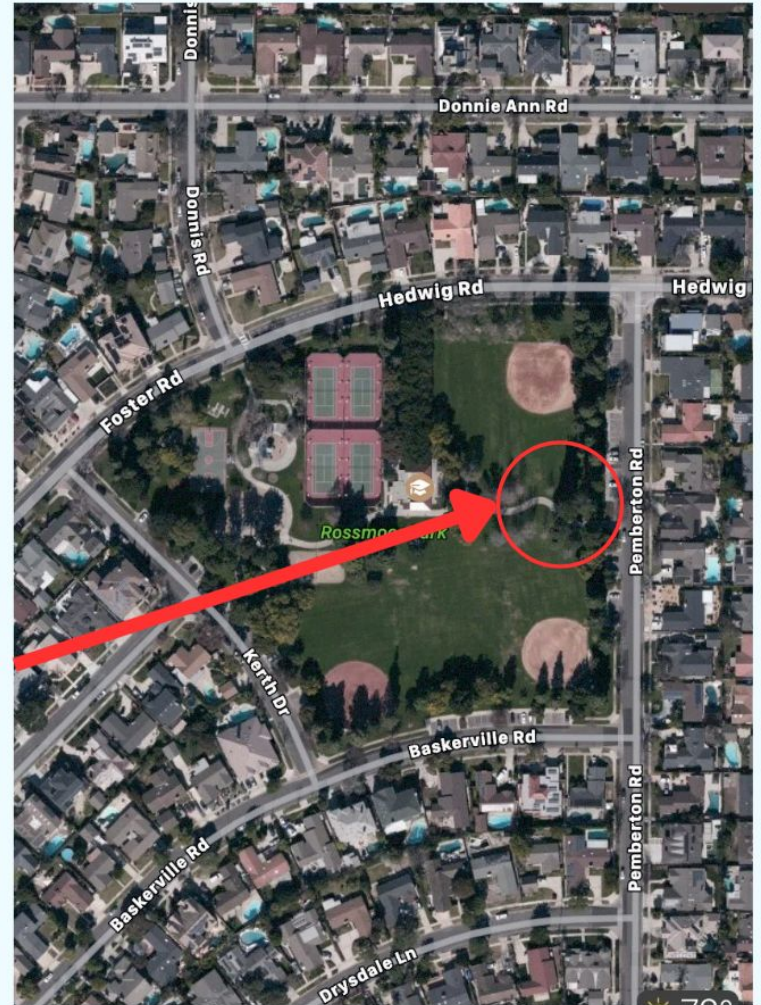



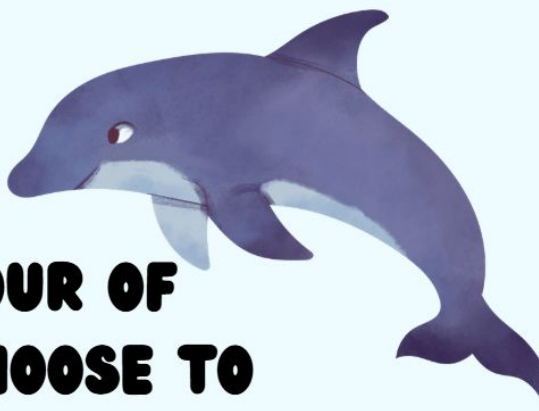
LOCATION



**CAMP SHARK IS NESTLED
WITHIN THE COMMUNITY OF
ROSSMOOR AT ROSSMOOR
PARK**

**DROP OFF AND PICK UP IS HERE
3232 HEDWIG RD, ROSSMOOR CA**

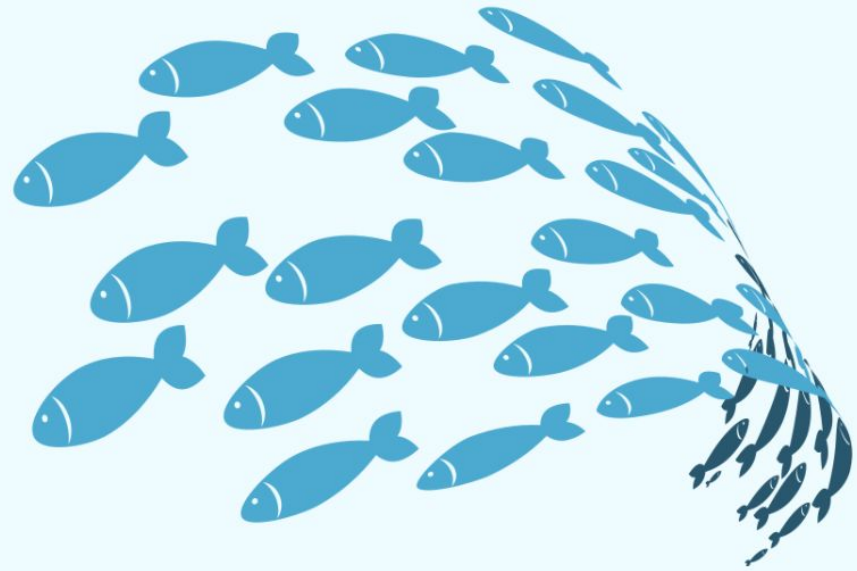




CAMPERS MAKE CHOICES EVERY HOUR OF EVERYDAY. YOUR CAMPER GETS TO CHOOSE TO PLAY A SPORT, MAKE CRAFTS, PLAY MUSICAL CHAIRS, GO TO THE PLAYGROUND OR JUST HANG OUT WITH THEIR NEW FRIENDS!

VOLUNTEERS

**WE COUNT ON OUR VOLUNTEERS TO
BE OUR EXTRA EYES 🐟 🐟 MOST OF OUR
VOLUNTEERS WERE CAMPERS THAT
HAVE GROWN UP IN OUR PROGRAMS
WHO COME TO GIVE BACK TO THE
COMMUNITY AND THE YC.**



CAMP S.H.A.R.K VALUES

SAFETY IS OUR NUMBER ONE PRIORITY.

**OUR CAMP IS ELECTRONICS FREE!
GIVING CAMPERS THE
OPPORTUNITY TO PLAY GAMES,
MAKE CRAFTS AND CREATE
MEMORIES!**

**CAMP SHARK WELCOMES
EVERYONE, WE ARE AGAINST
ALL BULLYING.**



CAMP GUIDANCE



**HIGHLY ENCOURAGED TO BRING A REUSABLE
WATER BOTTLE TO REFILL THROUGHOUT THE
DAY. STAFF CAN HELP THEM WITH THE FILL UP.**

**LABEL ALL ITEMS & CHECK LOST AND FOUND
FREQUENTLY.**

**WE RECOMMEND CAMPERS WEAR CLOSED-TOED
SHOES TO PROTECT THEM AGAINST BUG AND
BEE STINGS**

**WE REQUEST TOYS BE LEFT AT HOME. ANY
TOYS BROUGHT ARE THE CAMPER'S
RESPONSIBILITY.**



IF YOU HAVE A CAMPER AGED 5-6

**WE HIGHLY RECOMMEND THAT YOU
SEND THEM TO CAMP WITH AN EXTRA
CHANGE OF CLOTHES IN A BAG IN CASE
OF AN ACCIDENT.**



CAMP S.H.A.R.K.'S 6 PILLARS OF CHARACTER

Every camper must follow the rules to ensure a fun and safe summer.

**CAMP S.H.A.R.K IS A SAFE SPACE FOR ALL
THE FOLLOWING ACTIONS WILL NOT BE
TOLERATED:**

- BULLYING**
- ROUGH HOUSING**
- DISRESPECT TOWARDS OTHER CAMPERS OR
STAFF**
- STEALING**
- USE OF INAPPROPRIATE LANGUAGE**

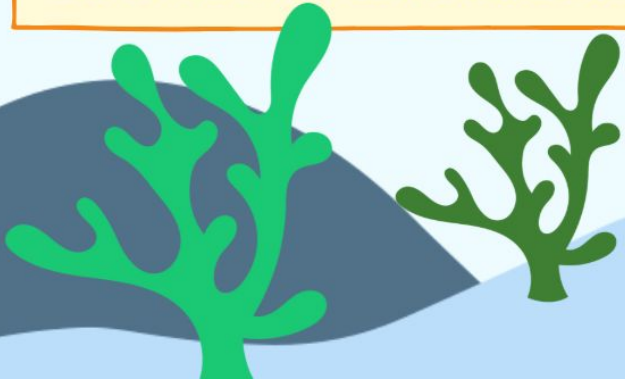
TRUSTWORTHINESS

BE HONEST

HAVE THE COURAGE TO DO THE RIGHT THING

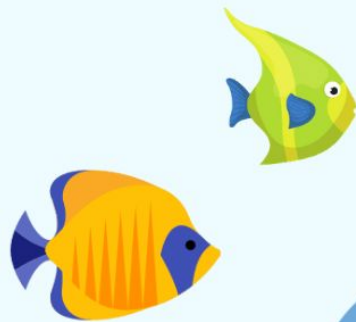
RESPECT

**TREAT OTHERS WITH RESPECT; FOLLOW THE
GOLDEN RULE · USE GOOD MANNERS, NOT BAD
LANGUAGE · BE CONSIDERATE OF THE FEELINGS
OF OTHERS**





Snack Shack



SNACK SHACK



THE SNACK SHACK OFFERS A VARIETY OF DIFFERENT FOOD AND SNACK OPTIONS FROM MAC & CHEESE, HOT POCKETS, CUP OF NOODLES TO CHIPS.

WE USE EZ SCHOOL SYSTEM WHERE EVERYTHING IS ONLINE. SNACK SHACK IS COMPLETELY CASHLESS. CASH WILL NOT BE ACCEPTED AT CAMP

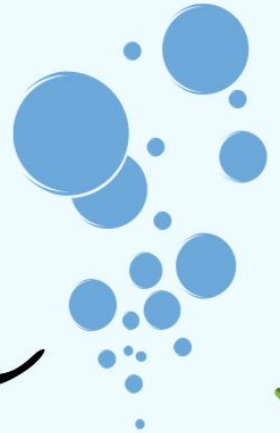
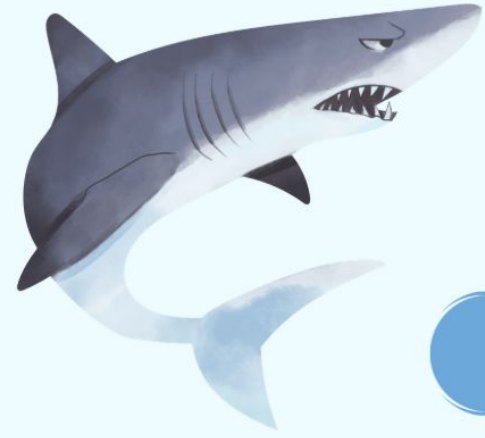
YOU HAVE THE ABILITY TO ADD RESTRICTIONS AND ALLERGIES ONTO THEIR SNACK ACCOUNTS.

I.E. NO CANDY, ALLERGIC TO PEANUTS ETC.



Registration

Information



NECESSARY PAPERWORK

CONDITIONS/RESTRICTIONS:

SHOULD HAVE BEEN INDICATED AT THE TIME YOU REGISTERED BUT IF THERE IS ANYTHING YOU'D LIKE TO ADD, PLEASE LET US KNOW. WE WILL DO OUR VERY BEST TO ACCOMMODATE EVERY CHILD.

SUNSCREEN & PERMISSION:

LABEL SUNSCREEN ON TAPE SO IT DOESN'T COME OFF. IF YOUR CAMPER NEEDS HELP APPLYING SUNSCREEN IT IS AVAILABLE.

THERE ARE SUNSCREEN REMINDERS MULTIPLE TIMES A DAY. EXTRA REMINDERS ON WARMER DAYS.

BATHROOMS: THERE ARE BATHROOMS FOR CAMPERS TO USE THAT ARE MONITORED BY STAFF AND VOLUNTEERS. CAMPERS CAN USE THESE AT ANY TIME.

WE REMIND YOUNGER CAMPERS TO USE THE RESTROOM PERIODICALLY.

IMPORTANT INFORMATION

ALL DAILY CAMP FEES, FIELD TRIPS AND CLASSES ARE PAID IN FULL AT THE TIME OF REGISTRATION. WEEKLY CAMP FEE CAN BE PAID WEEKLY AND REQUIRES A \$28 DEPOSIT PER WEEK TO HOLD THE SPOT. THE BALANCE FOR CAMP IS DUE WEDNESDAY PRIOR TO CAMP WEEK. CHECKS MUST BE PAID IN THE OFFICE ON THE WEDNESDAY BEFORE THE CAMP WEEK (8:00AM-5:00PM), . CREDIT CARDS CAN BE PROVIDED FOR AUTOMATIC BILLING OF ANY BALANCES FOR THE COMING WEEK.

LATE PICK UP: A LATE FEE OF \$1 DOLLAR PER MINUTE WILL BE CHARGED.

DEPOSITS GUARANTEE SPACE BUT ARE NEITHER REFUNDABLE NOR TRANSFERABLE TO OTHER CAMPERS, WEEKS OR PROGRAM ELEMENTS. FAILURE TO PAY BALANCE BY DEADLINE WILL RESULT IN FORFEITURE OF GUARANTEED SPACE AND LOSS OF ALL DEPOSITS.

FIELD TRIPS ARE LIMITED TO THE FIRST 60 PARTICIPANTS. ALL FIELD TRIPS ARE SUBJECT TO CHANGE OR CANCELLATION AT ANY TIME WITHOUT NOTICE. WALKING FIELD TRIPS ARE LIMITED TO THE FIRST 30 PARTICIPANTS AND INCLUDE A \$10 SPENDING ALLOWANCE. (CHILD MUST BE OVER 7 YRS TO DO WALKING TRIPS)

LAST MINUTE REGISTRATION SUBJECT TO AVAILABILITY.



IMPORTANT INFORMATION

CAMP



SHARK

SCIENCE • HANDS ON • ART • RECREATION • KNOWLEDGE



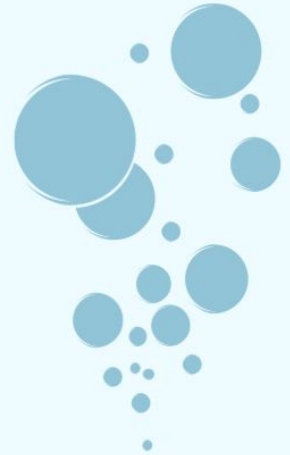
**T-SHIRTS ARE \$15
T-SHIRTS MUST BE WORN ON FIELD TRIPS AND
WALKING FIELD TRIPS. CAMPER WITH OUT T-
SHIRT WILL BE REQUIRED TO PURCHASE A NEW
SHIRT AT CAMP TO ATTEND FIELD TRIP.**

**T-SHIRTS WILL BE DISTRIBUTED AT
CAMP ON CAMPERS FIRST DAY. T-
SHIRTS CAN BE BOUGHT AND PICKED UP
AT CAMP.**





REGISTER FOR CAMP S.H.A.R.K
AT [THEYOUTHCENTER.ORG](https://theyouthcenter.org)
OR



An underwater-themed graphic with a dark blue, irregularly shaped background. The word "Questions?" is written in a white, cursive font. Below it, the phone number "CALL (562) 493-4043" is written in a white, bold, sans-serif font. The background is decorated with white outlines of bubbles and several green and blue striped fish swimming. At the bottom corners, there are green illustrations of coral and seaweed.

Questions?

CALL (562) 493-4043