



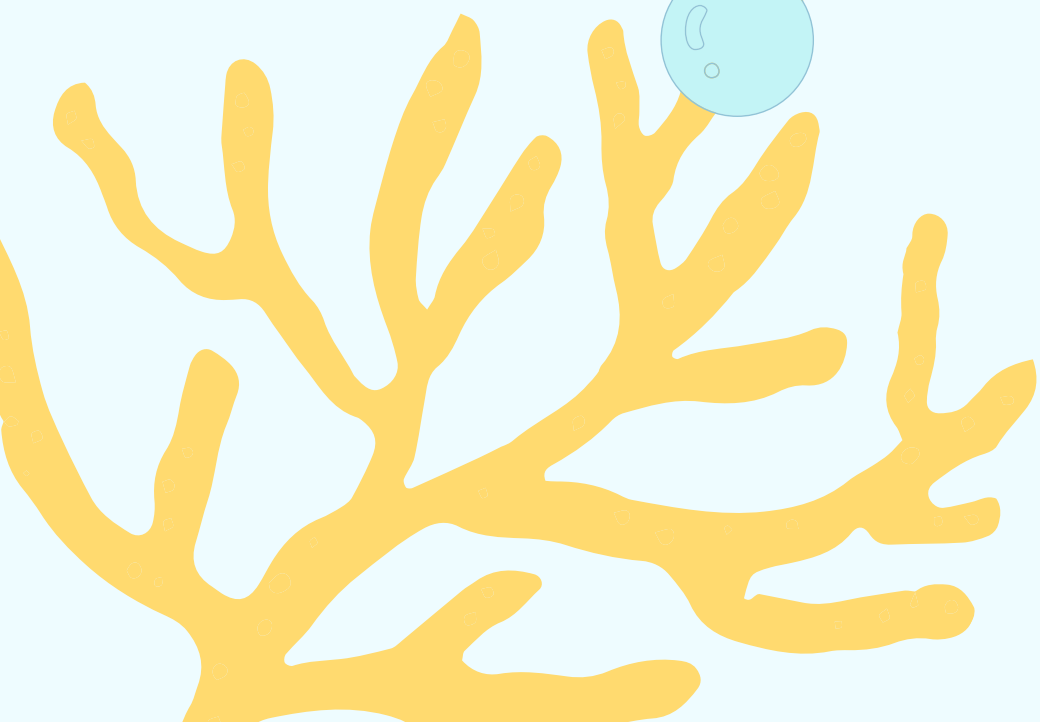
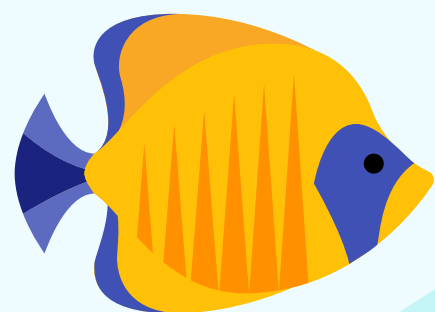
The Youth Center

presents

CAMP S.H.A.R.K.

Science - Hands on - Art - Recreation - Knowledge

Parent Orientation





ALISHA DONAHUE

Co-Camp Director



JOCELYN GARCIA

Co-Camp Director



LINA LUMME

Executive Director



CAMP DATES:

**JUNE 10TH -
AUGUST 9TH**

HOURS

BASIC 9:00 AM - 4:00 PM

EXTENDED 7:00 AM - 7:00 PM

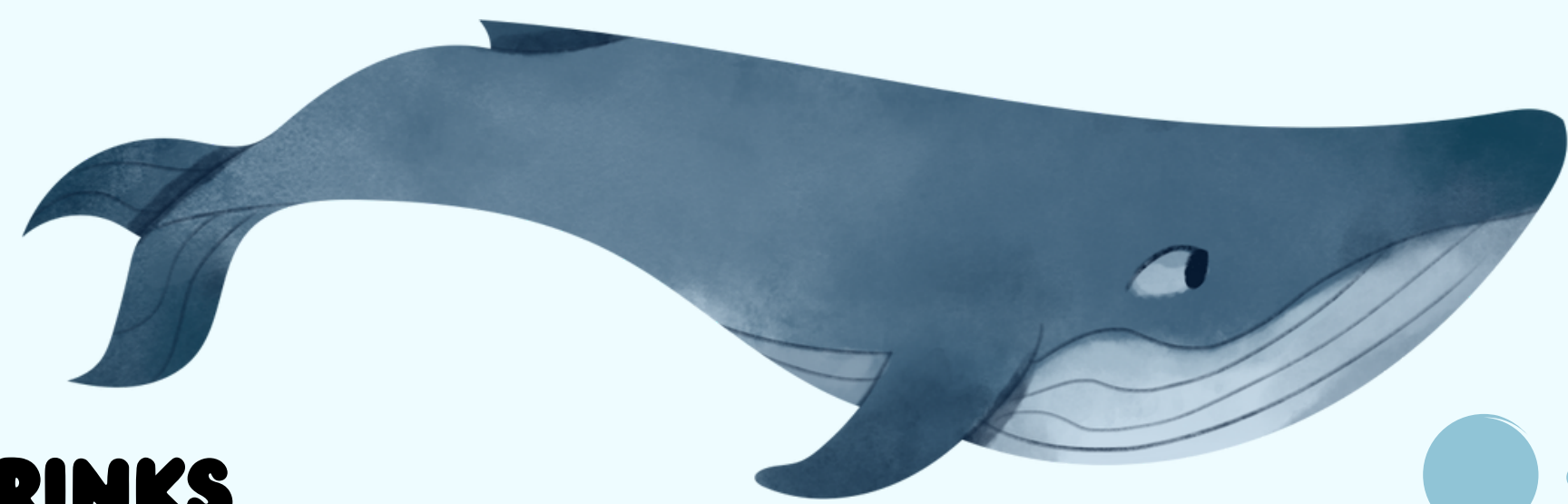
10:1

**KID TO STAFF
RATIOS**

AGES 5 - 12



OPTIONAL WEEKLY BUS FIELD TRIPS



JOHN'S INCREDIBLE PIZZA

THE RINKS

BILLY BEEZ

BIG AIR TRAMPOLINE PARK

SEAL BEACH

DAVE & BUSTERS

L.A. NATURAL HISTORY MUSEUM DISCOVERY SCIENCE CUBE

**OFF THE WALL FUN
CENTER**

BOWLING

BOUNCE U

AQUARIUM OF THE PACIFIC

KNOTT'S BERRY FARM

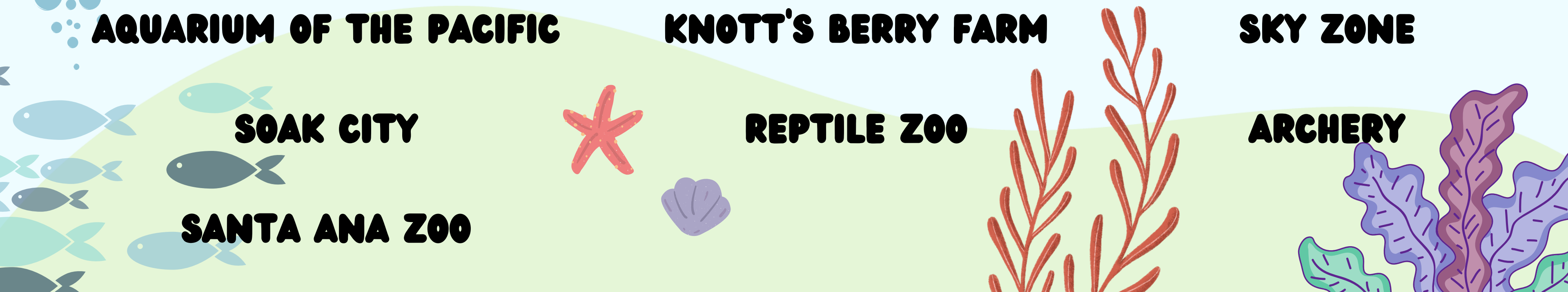
SKY ZONE

SOAK CITY

REPTILE ZOO

ARCHERY

SANTA ANA ZOO



OPTIONAL WALKING FIELD TRIPS

CHIPOTLE

BOWLOLOGY

STARBUCKS

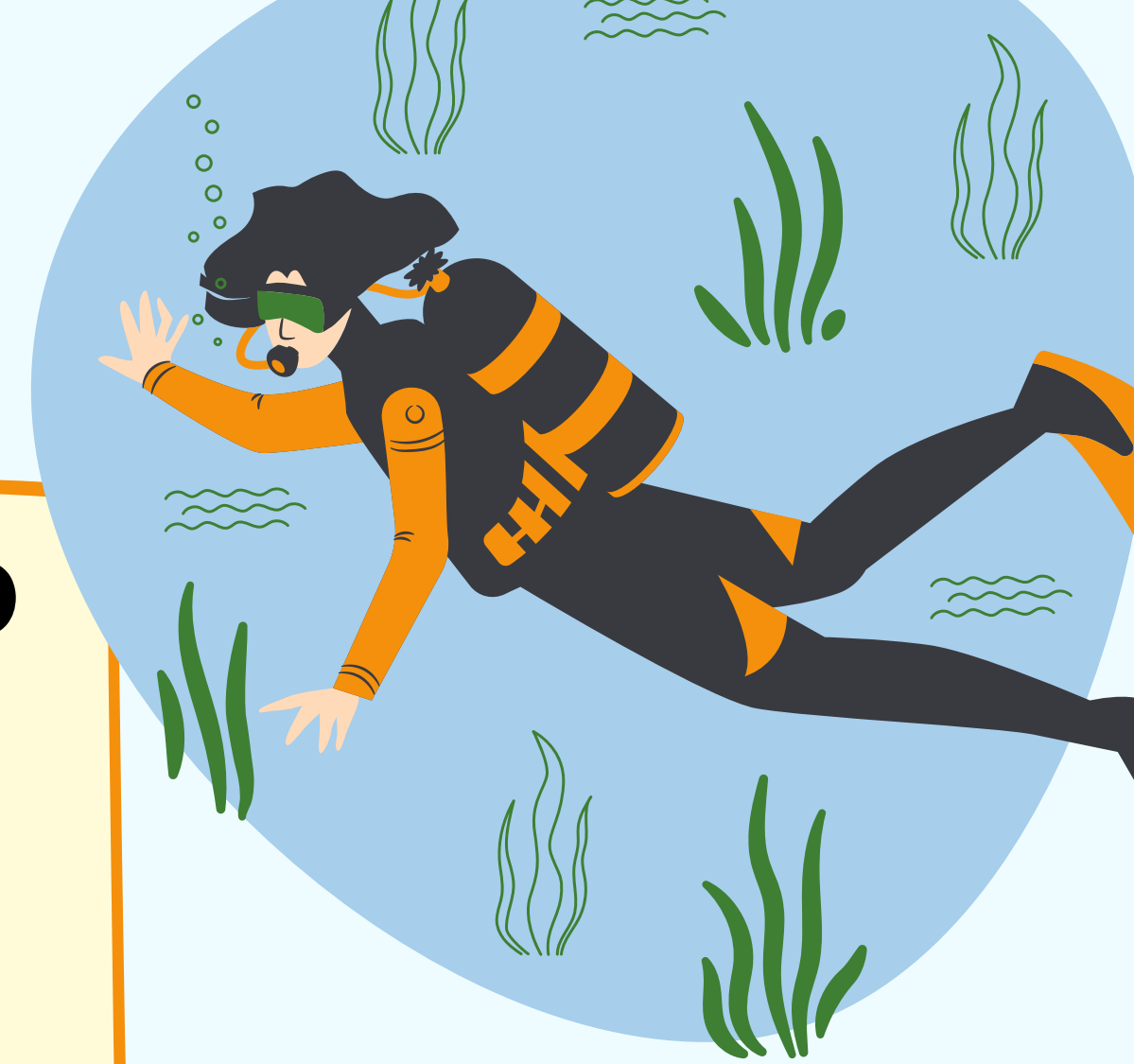
PAULS PLACE

YOGURTLAND

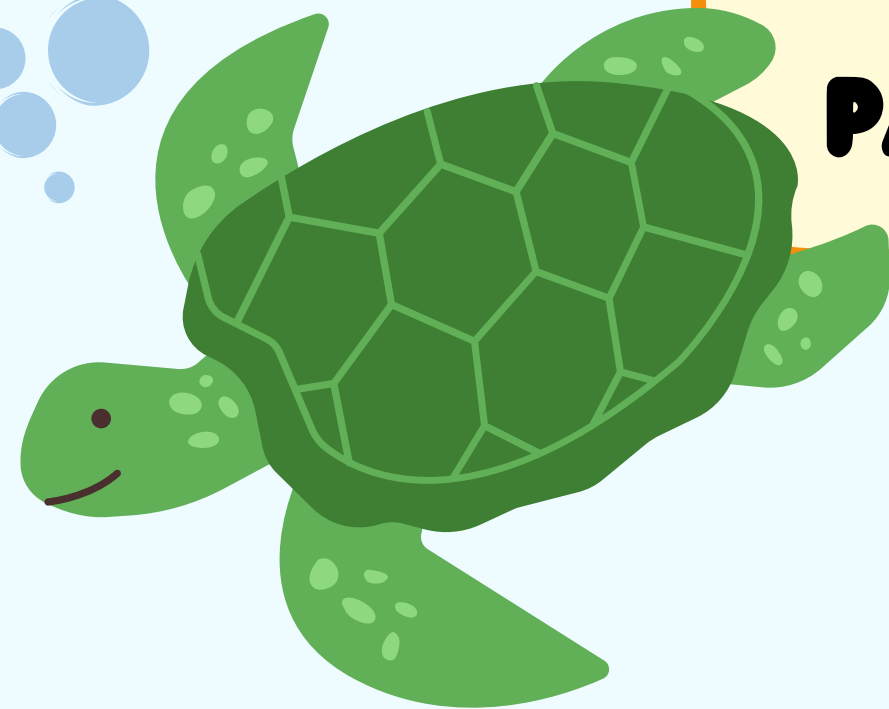
IN-N-OUT

CHICK FIL A

BLAZE PIZZA



AND MORE!!

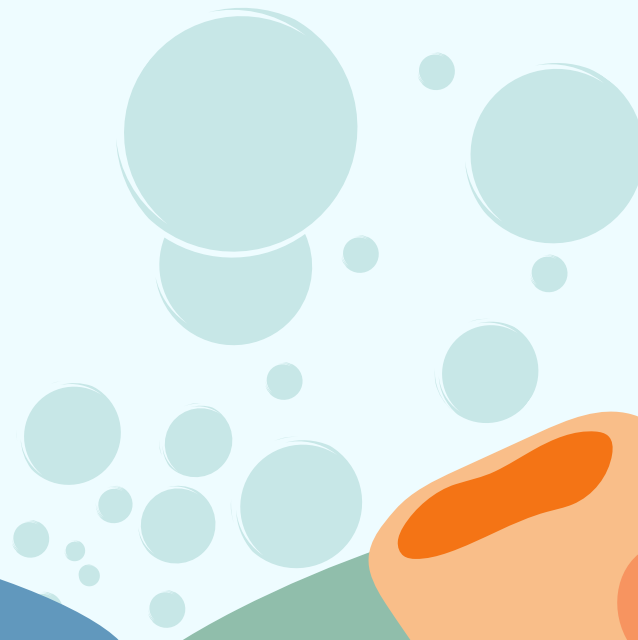
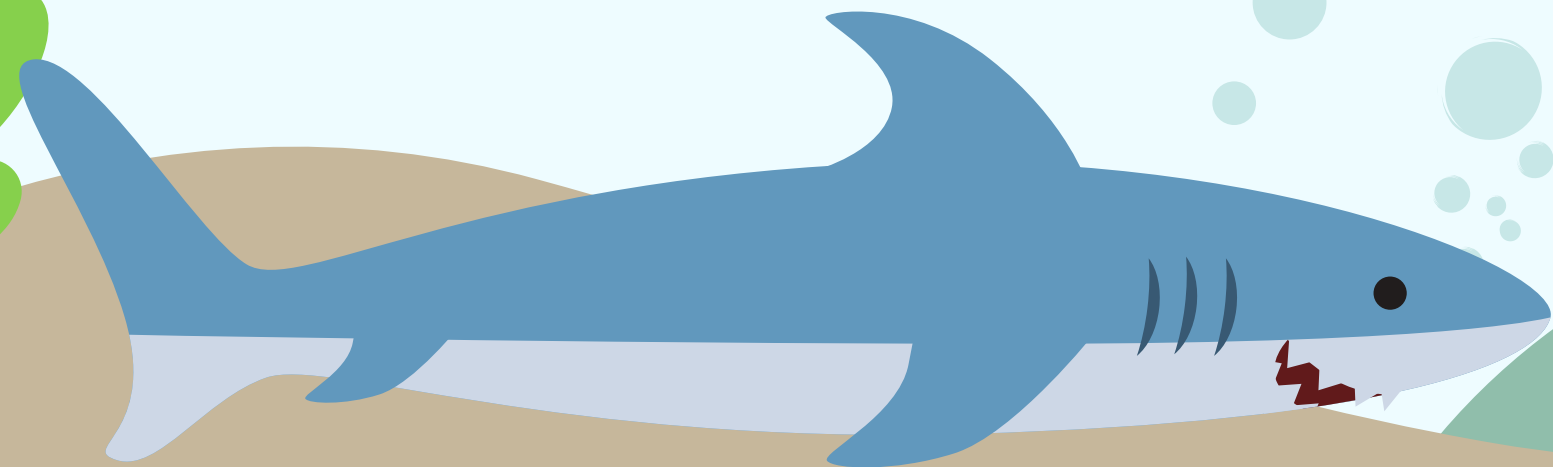


ADD ON CLASSES

**MONDAY..... SCIENCE &
ART**

**WEDNESDAY..... COOKING &
SPORTS**

FRIDAY..... GOLF



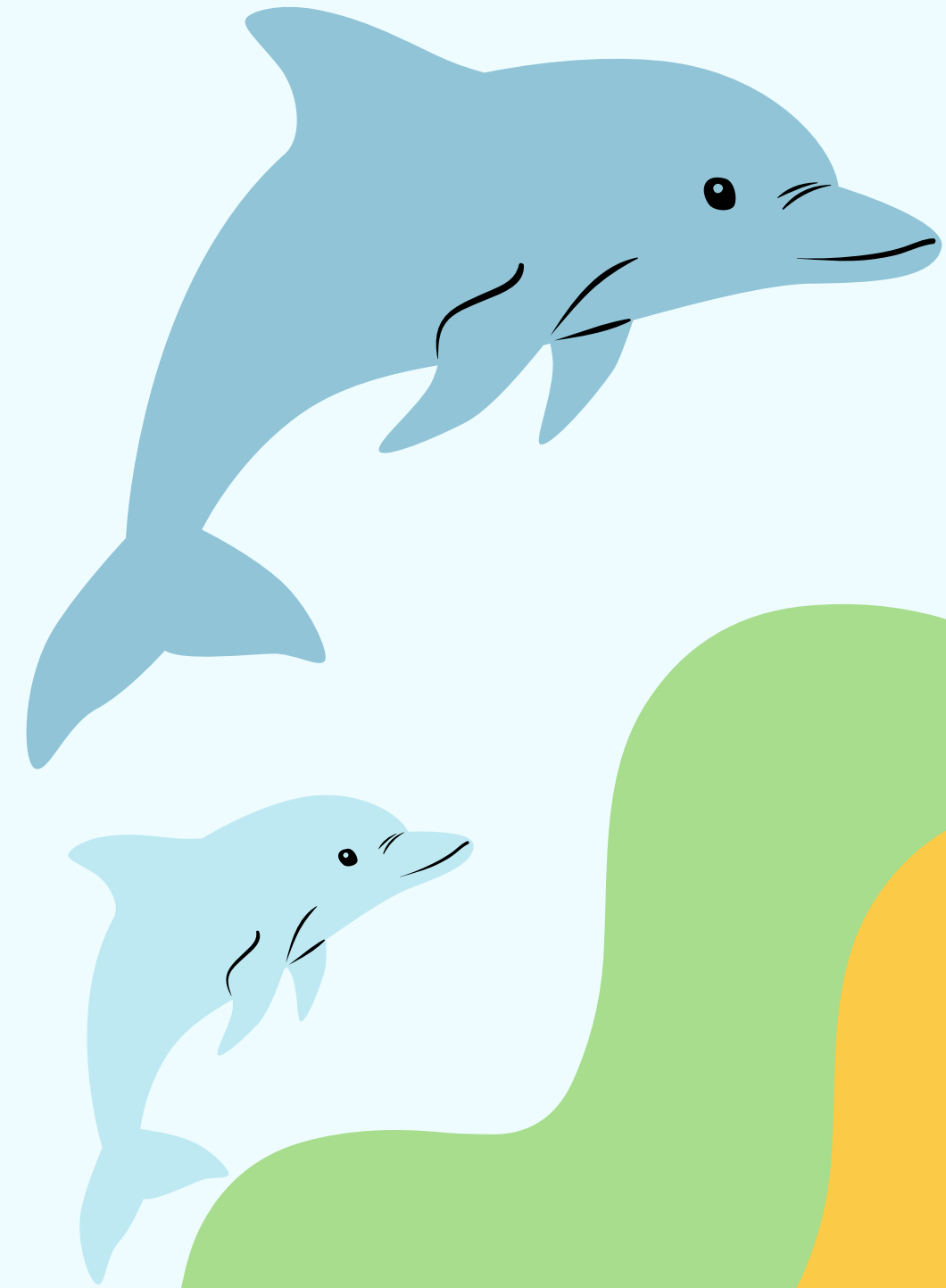
GAMES, ARTS & CRAFTS

THREE ACTIVITIES PER HOUR:

**CRAFTS
DODGEBALL
LANYARDS
RELAY RACES
PLAYGROUND
AND MORE!**

EQUIPMENT AVAILABLE:

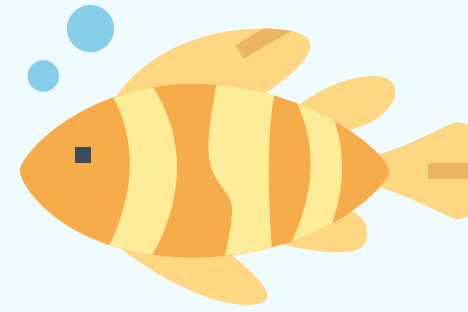
**BASKETBALLS
JUMP ROPE
FOOTBALLS
VOLLEYBALLS
HULA HOOPS
HAND BALLS
AND MORE!**



WATER ACTIVITIES

**DIFFERENT INTERACTIVE
WATER GAMES EACH FRIDAY**

1 - 3 PM

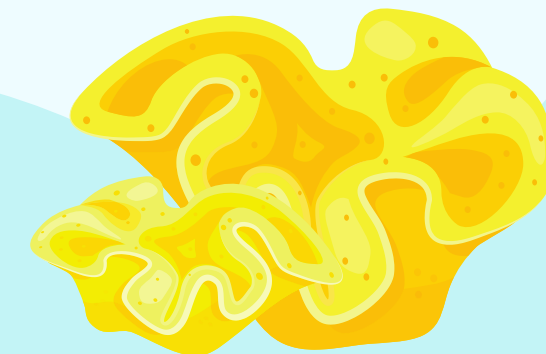
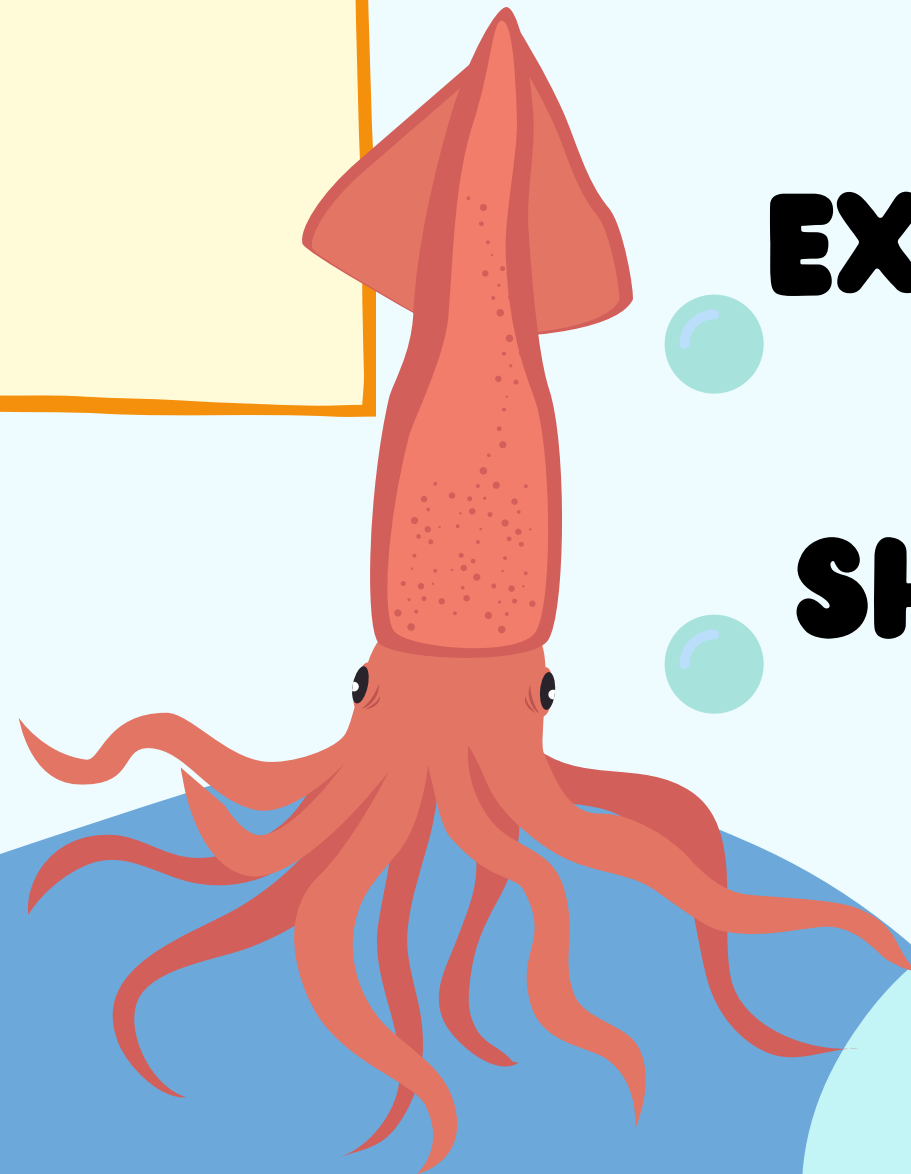
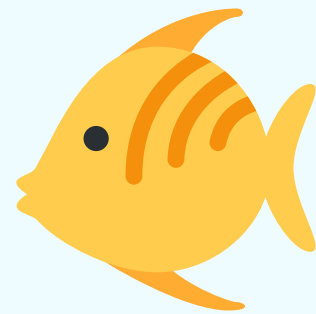


WHAT TO BRING:

BATHING SUIT

EXTRA CHANGE OF CLOTHES

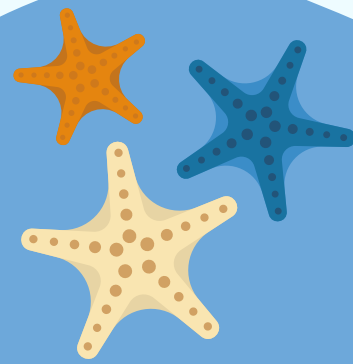
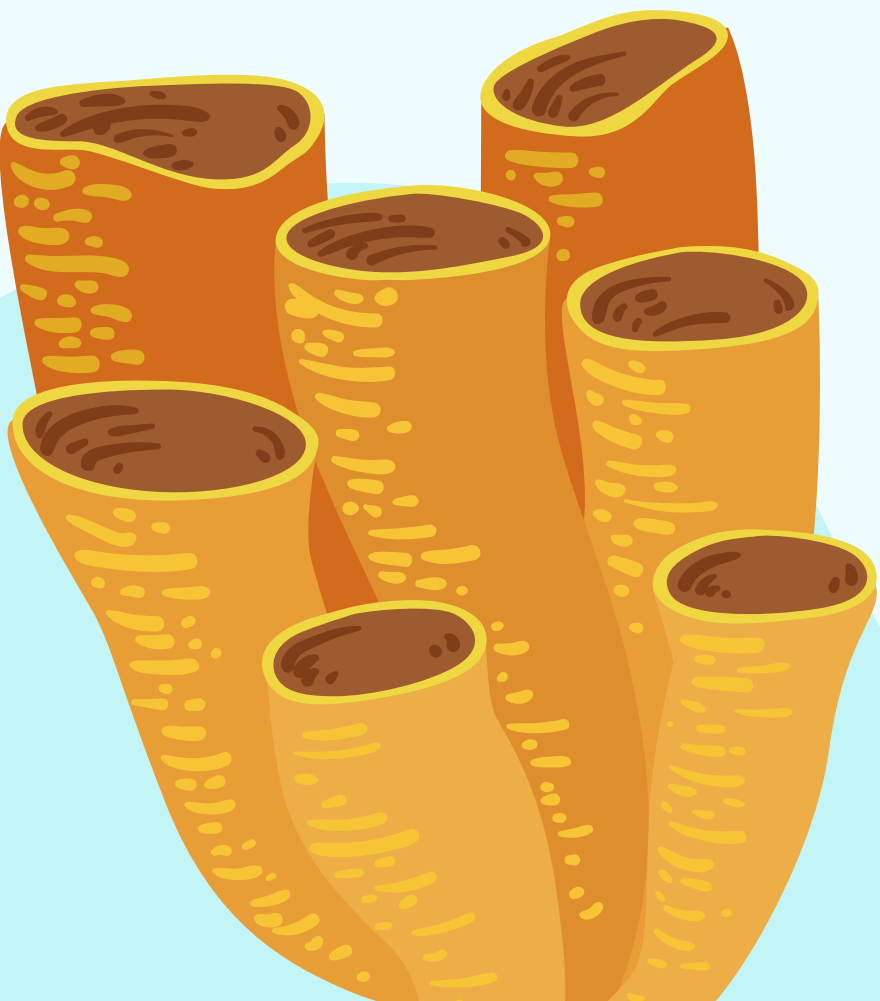
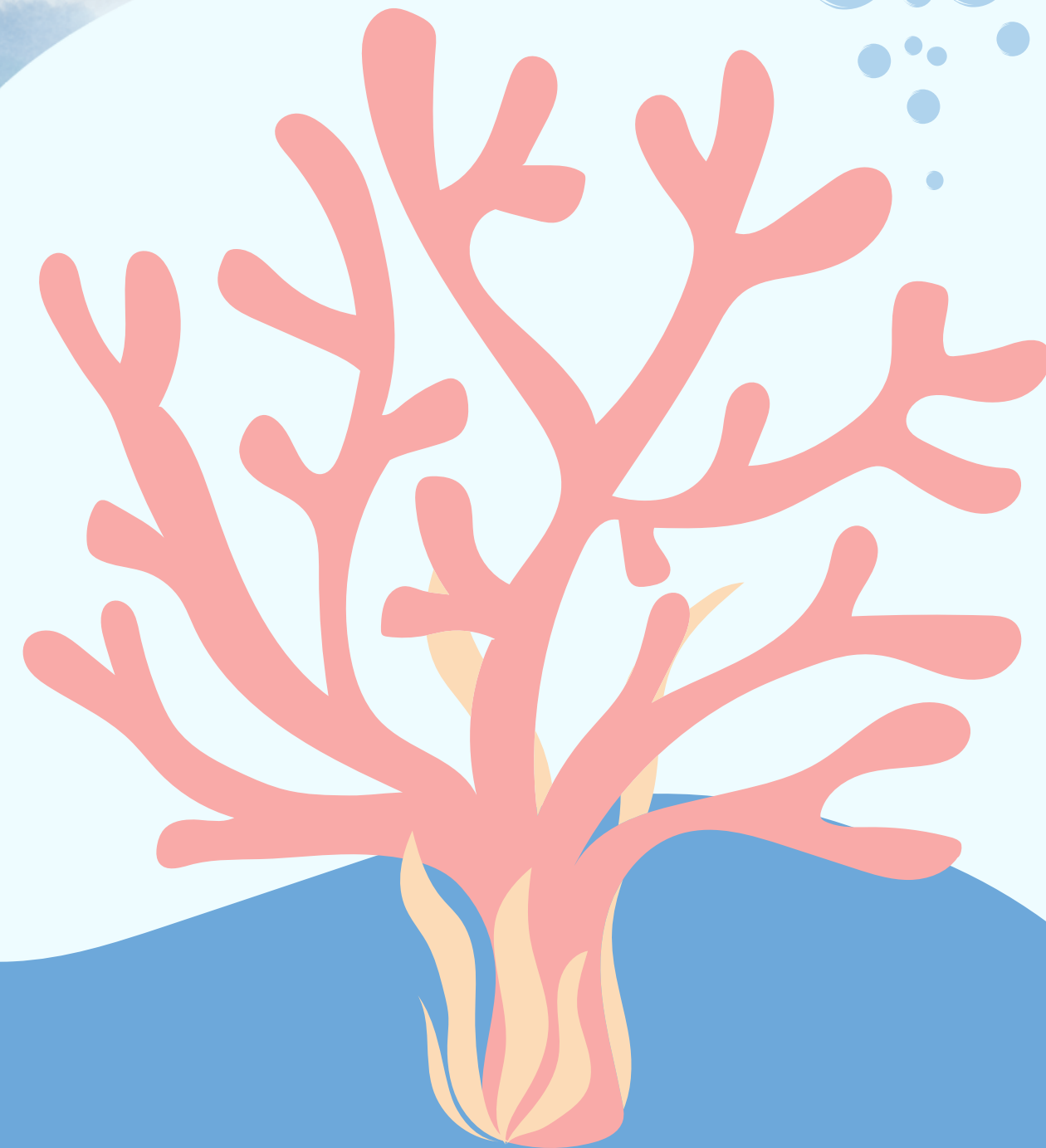
SHOES THAT CAN GET WET



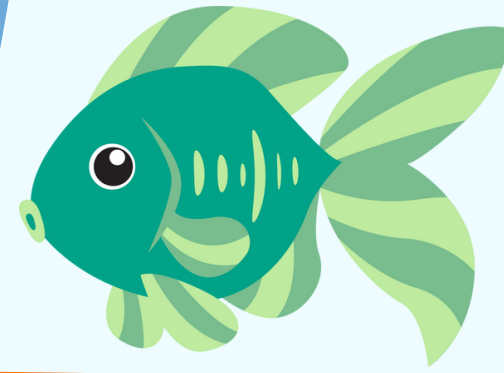
SPECIAL THEME DAYS

**EVERY MONDAY
WE HIGHLY ENCOURAGE EVERYONE TO
PARTICIPATE!**

**FIRST MONDAY
JUNE 10TH REPRESENT YOUR
FAVORITE SPORT!**

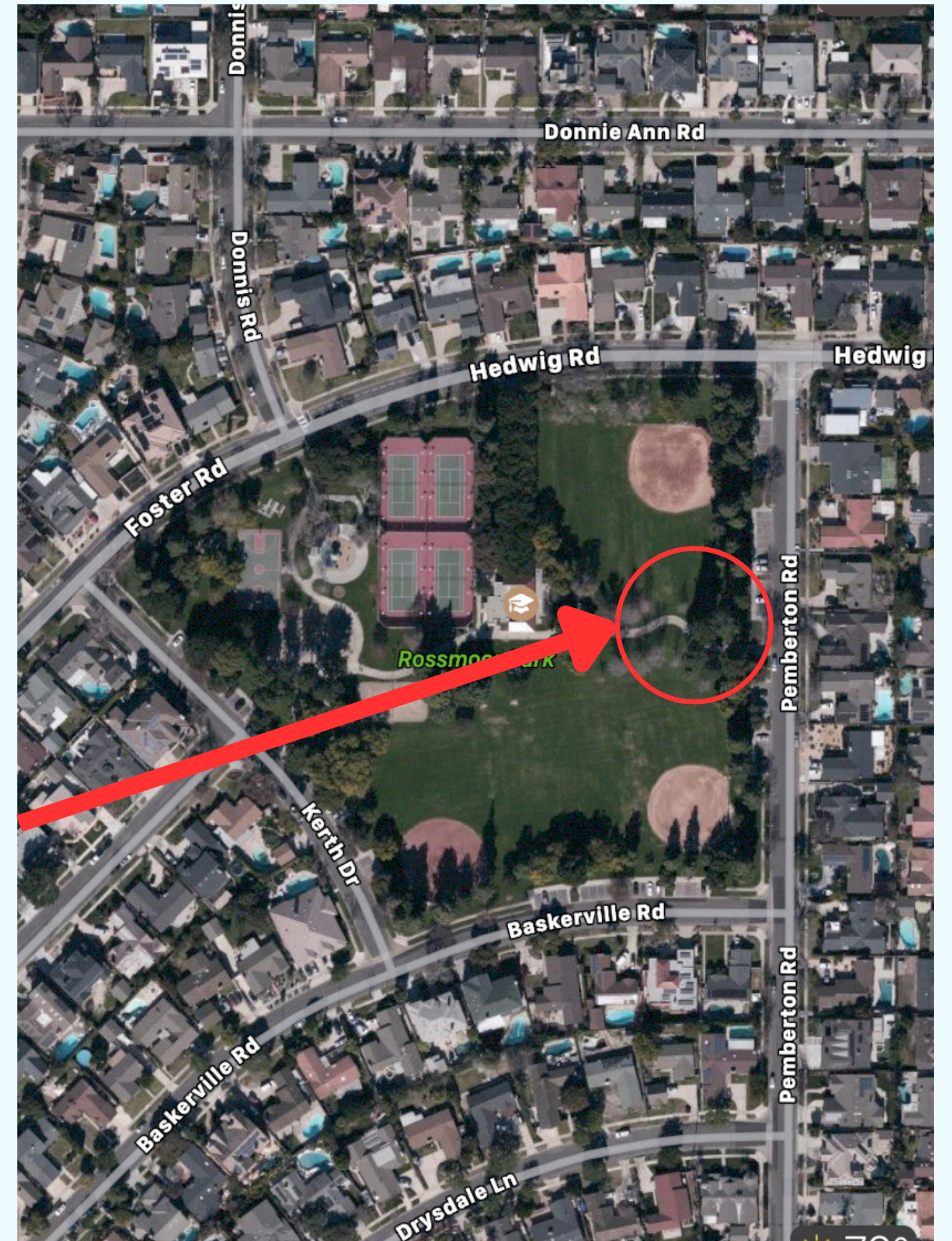


LOCATION



**CAMP SHARK IS NESTLED
WITHIN THE COMMUNITY OF
ROSSMOOR AT ROSSMOOR
PARK**

**DROP OFF AND PICK UP IS HERE
3232 HEDWIG RD, ROSSMOOR CA**

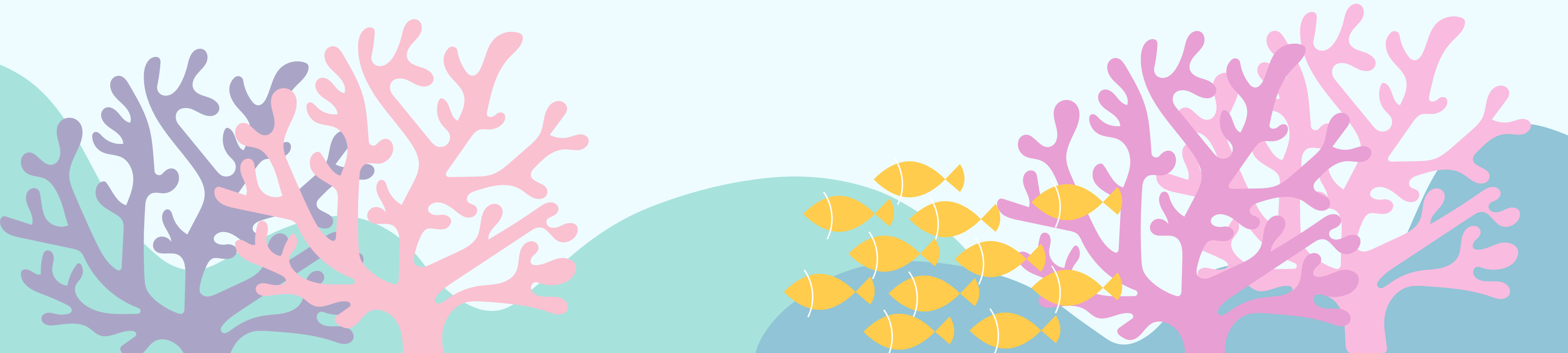
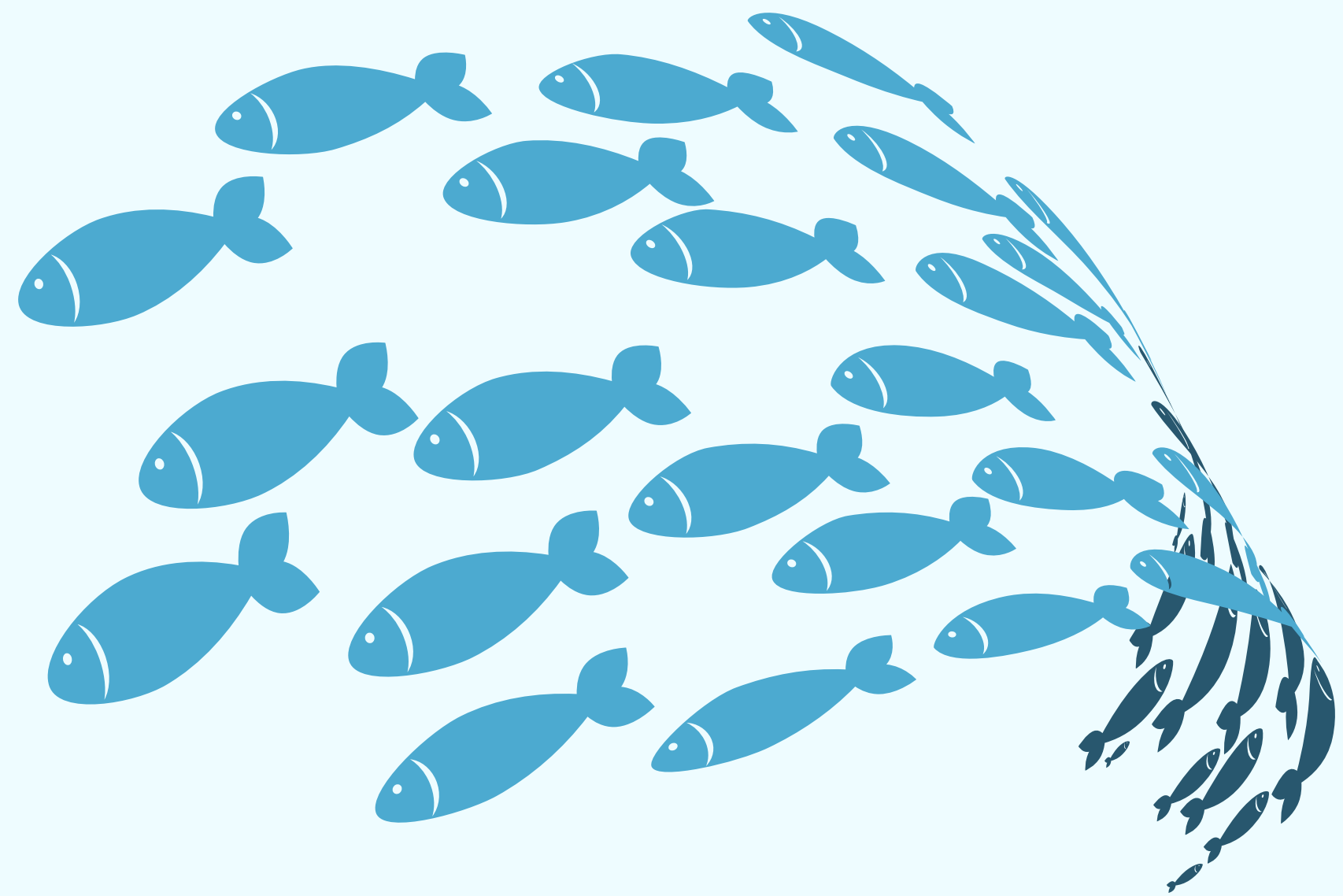




CAMPERS MAKE CHOICES EVERY HOUR OF EVERYDAY. YOUR CAMPER GETS TO CHOOSE TO PLAY A SPORT, MAKE CRAFTS, PLAY MUSICAL CHAIRS, GO TO THE PLAYGROUND OR JUST HANG OUT WITH THEIR NEW FRIENDS!

VOLUNTEERS

WE COUNT ON OUR VOLUNTEERS TO BE OUR EXTRA EYES 🗯️ 🗯️ MOST OF OUR VOLUNTEERS WERE CAMPERS THAT HAVE GROWN UP IN OUR PROGRAMS WHO COME TO GIVE BACK TO THE COMMUNITY AND THE YC.

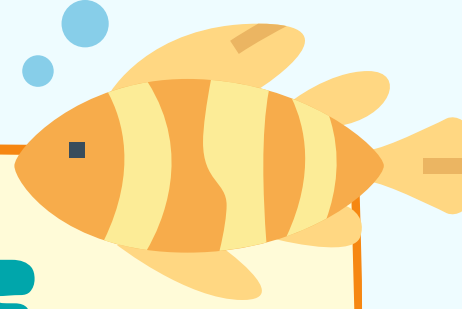
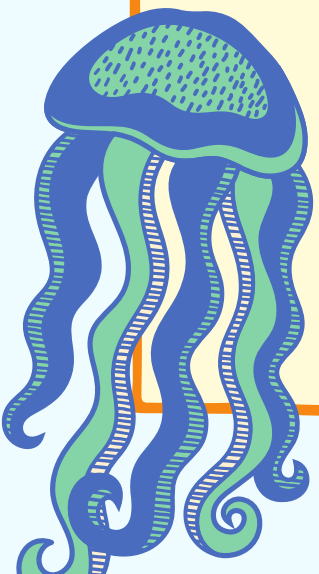


CAMP S.H.A.R.K VALUES

SAFETY IS OUR NUMBER ONE PRIORITY.

**OUR CAMP IS ELECTRONICS FREE!
GIVING CAMPERS THE
OPPORTUNITY TO PLAY GAMES,
MAKE CRAFTS AND CREATE
MEMORIES!**

**CAMP SHARK WELCOMES
EVERYONE, WE ARE AGAINST
ALL BULLYING.**



CAMP GUIDANCE

**HIGHLY ENCOURAGED TO BRING A REUSABLE
WATER BOTTLE TO REFILL THROUGHOUT THE
DAY. STAFF CAN HELP THEM WITH THE FILL UP.**

**LABEL ALL ITEMS & CHECK LOST AND FOUND
FREQUENTLY.**

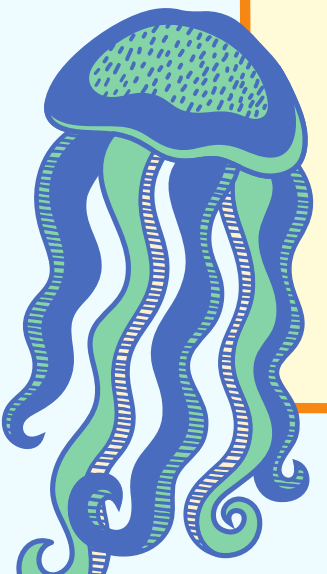
**WE RECOMMEND CAMPERS WEAR CLOSED-TOED
SHOES (UNLESS ITS WATER DAY) TO PROTECT
THEM AGAINST BUG AND BEE STINGS**

**WE REQUEST TOYS BE LEFT AT HOME. ANY
TOYS BROUGHT ARE THE CAMPER'S
RESPONSIBILITY.**



IF YOU HAVE A CAMPER AGED 5-6

**WE HIGHLY RECOMMEND THAT YOU
SEND THEM TO CAMP WITH AN EXTRA
CHANGE OF CLOTHES IN A BAG IN CASE
OF AN ACCIDENT.**



CAMP S.H.A.R.K.'S 6 PILLARS OF CHARACTER

Every camper must follow the rules to ensure a fun and safe summer.

**CAMP S.H.A.R.K IS A SAFE SPACE FOR ALL
THE FOLLOWING ACTIONS WILL NOT BE**

TOLERATED:

- BULLYING**
- ROUGH HOUSING**
- DISRESPECT TOWARDS OTHER CAMPERS OR
STAFF**
- STEALING**
- USE OF INAPPROPRIATE LANGUAGE**

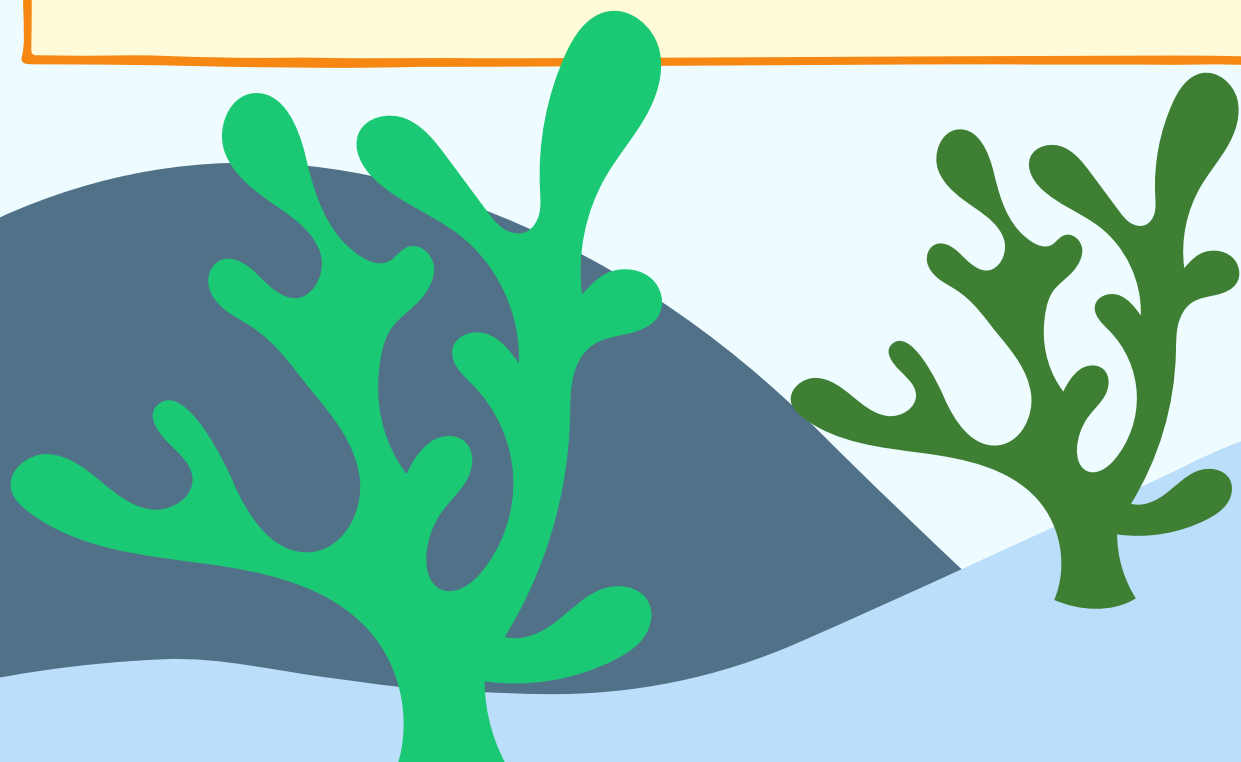
TRUSTWORTHINESS

BE HONEST

HAVE THE COURAGE TO DO THE RIGHT THING

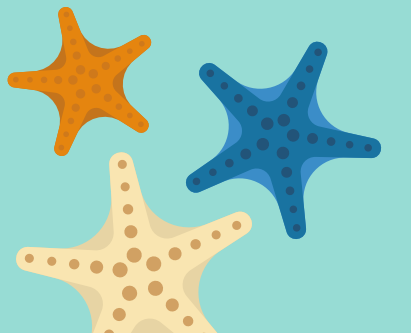
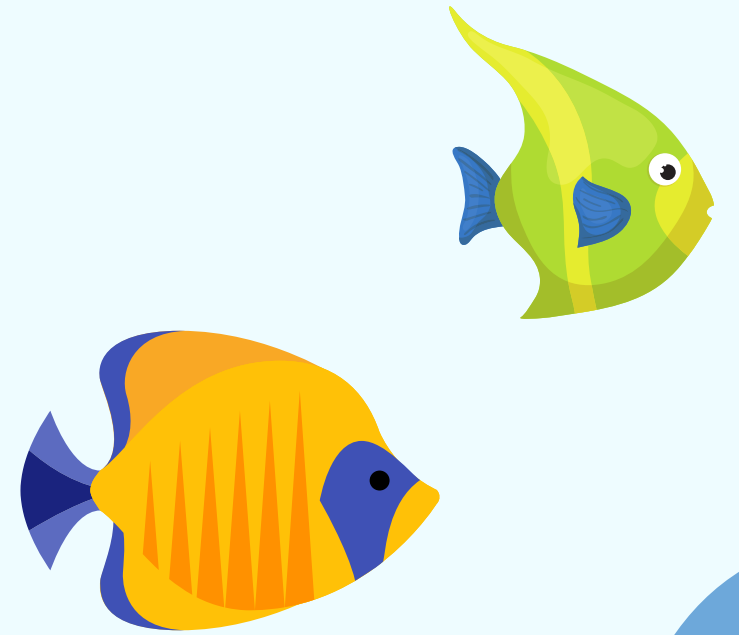
RESPECT

**TREAT OTHERS WITH RESPECT: FOLLOW THE
GOLDEN RULE · USE GOOD MANNERS, NOT BAD
LANGUAGE · BE CONSIDERATE OF THE FEELINGS
OF OTHERS**





Snack
Shack



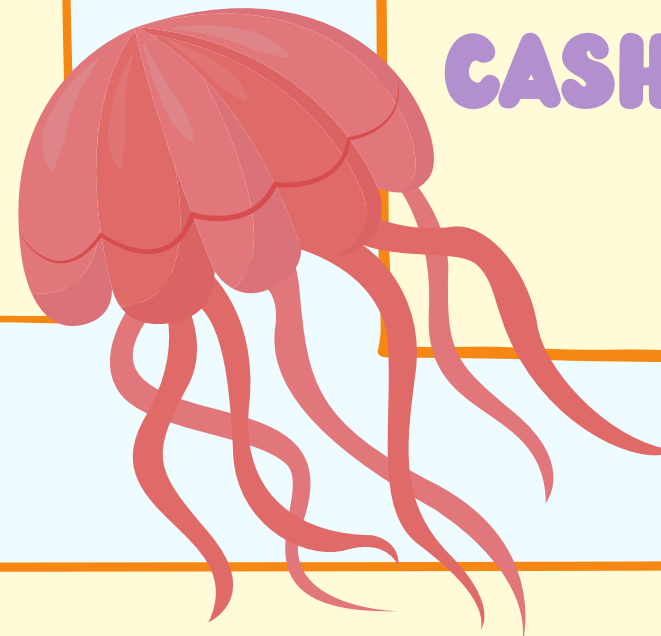
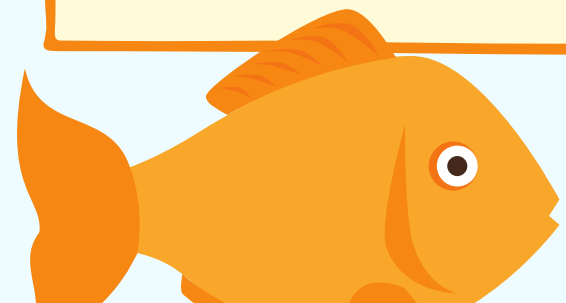
SNACK SHACK

THE SNACK SHACK OFFERS A VARIETY OF DIFFERENT FOOD AND SNACK OPTIONS FROM HOT DOGS, HOT POCKETS, CUP OF NOODLES TO PIRATES BOOTY.

WE USE EZ SCHOOL SYSTEM WHERE EVERYTHING IS ONLINE. SNACK SHACK IS COMPLETELY CASHLESS. CASH WILL NOT BE ACCEPTED AT CAMP

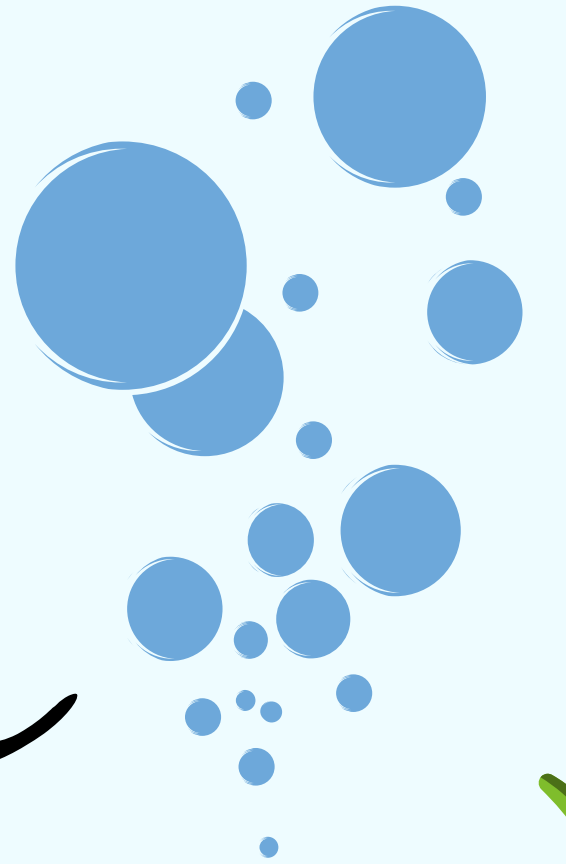
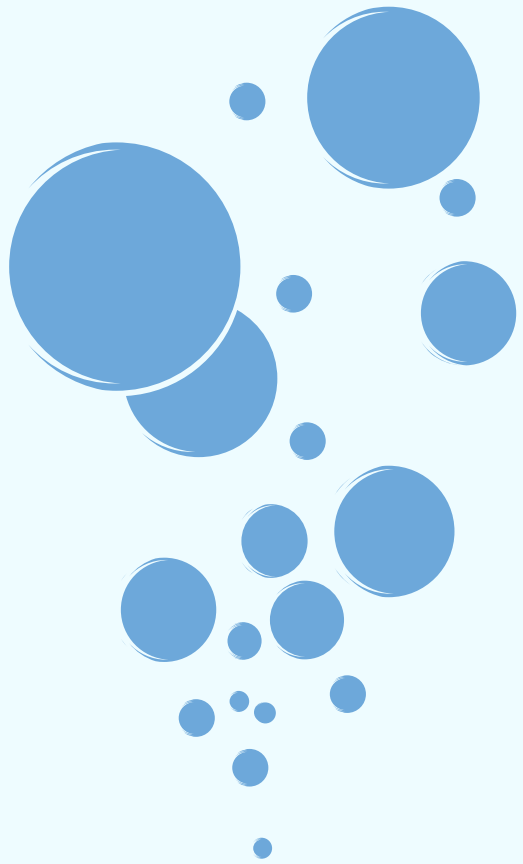
YOU HAVE THE ABILITY TO ADD RESTRICTIONS AND ALLERGIES ONTO THEIR SNACK ACCOUNTS.

I.E. NO CANDY, ALLERGIC TO PEANUTS ETC.



Registration

Information



NECESSARY PAPERWORK

CONDITIONS/RESTRICTIONS:

SHOULD HAVE BEEN INDICATED AT THE TIME YOU REGISTERED BUT IF THERE IS ANYTHING YOU'D LIKE TO ADD, PLEASE LET US KNOW. WE WILL DO OUR VERY BEST TO ACCOMMODATE EVERY CHILD.

SUNSCREEN & PERMISSION:

LABEL SUNSCREEN ON TAPE SO IT DOESN'T COME OFF. IF YOUR CAMPER NEEDS HELP APPLYING SUNSCREEN IT IS AVAILABLE.

THERE ARE SUNSCREEN REMINDERS MULTIPLE TIMES A DAY. EXTRA REMINDERS ON WARMER DAYS.

BATHROOMS: THERE ARE BATHROOMS FOR CAMPERS TO USE THAT ARE MONITORED BY STAFF AND VOLUNTEERS. CAMPERS CAN USE THESE AT ANY TIME.

WE REMIND YOUNGER CAMPERS TO USE THE RESTROOM PERIODICALLY.

IMPORTANT INFORMATION

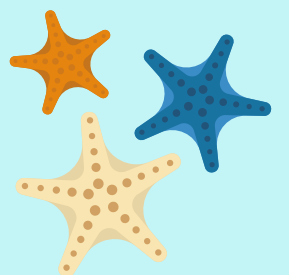
ALL DAILY CAMP FEES, FIELD TRIPS AND CLASSES ARE PAID IN FULL AT THE TIME OF REGISTRATION. WEEKLY CAMP FEE CAN BE PAID WEEKLY AND REQUIRES A \$28 DEPOSIT PER WEEK TO HOLD THE SPOT. THE BALANCE FOR CAMP IS DUE WEDNESDAY PRIOR TO CAMP WEEK. CHECKS MUST BE PAID IN THE OFFICE ON THE WEDNESDAY BEFORE THE CAMP WEEK (8:00AM-5:00PM), . CREDIT CARDS CAN BE PROVIDED FOR AUTOMATIC BILLING OF ANY BALANCES FOR THE COMING WEEK.

LATE PICK UP: A LATE FEE OF \$1 DOLLAR PER MINUTE WILL BE CHARGED.

DEPOSITS GUARANTEE SPACE BUT ARE NEITHER REFUNDABLE NOR TRANSFERABLE TO OTHER CAMPERS, WEEKS OR PROGRAM ELEMENTS. FAILURE TO PAY BALANCE BY DEADLINE WILL RESULT IN FORFEITURE OF GUARANTEED SPACE AND LOSS OF ALL DEPOSITS.

FIELD TRIPS ARE LIMITED TO THE FIRST 60 PARTICIPANTS. ALL FIELD TRIPS ARE SUBJECT TO CHANGE OR CANCELLATION AT ANY TIME WITHOUT NOTICE. WALKING FIELD TRIPS ARE LIMITED TO THE FIRST 30 PARTICIPANTS AND INCLUDE A \$10 SPENDING ALLOWANCE. (CHILD MUST BE OVER 7 YRS TO DO WALKING TRIPS)

LAST MINUTE REGISTRATION SUBJECT TO AVAILABILITY.



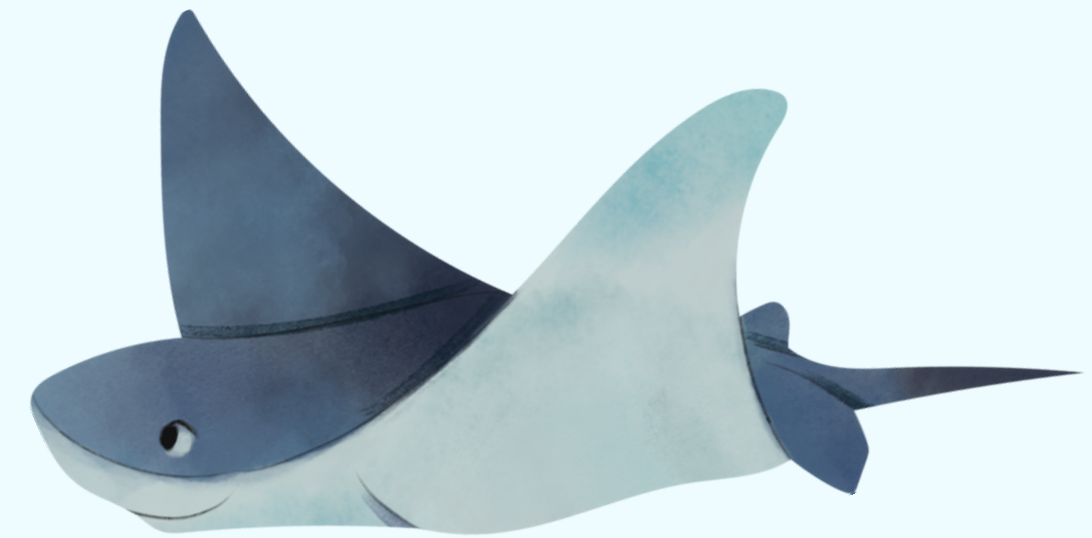
IMPORTANT INFORMATION

CAMP



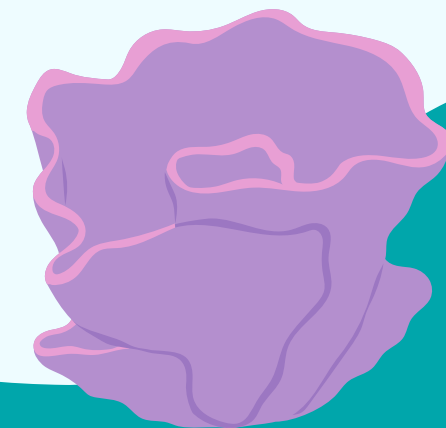
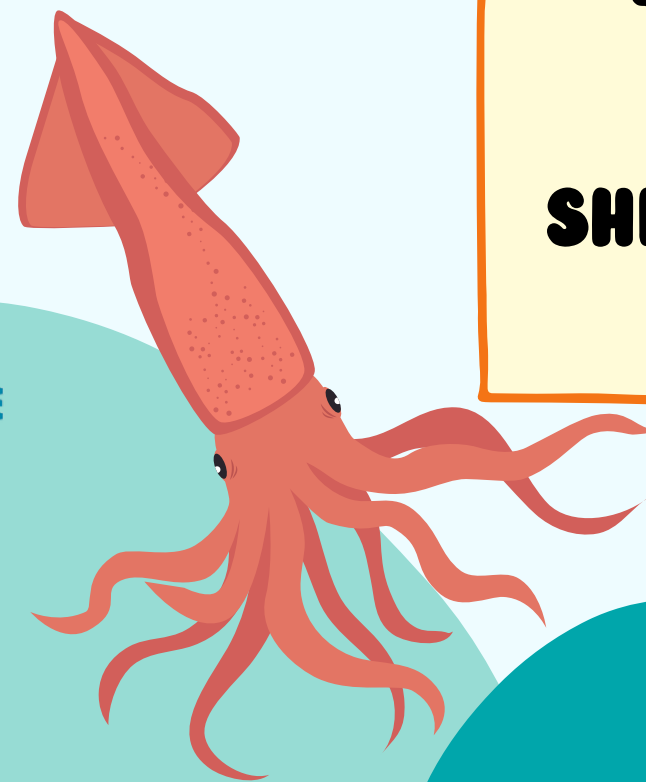
SHARK

SCIENCE • HANDS ON • ART • RECREATION • KNOWLEDGE



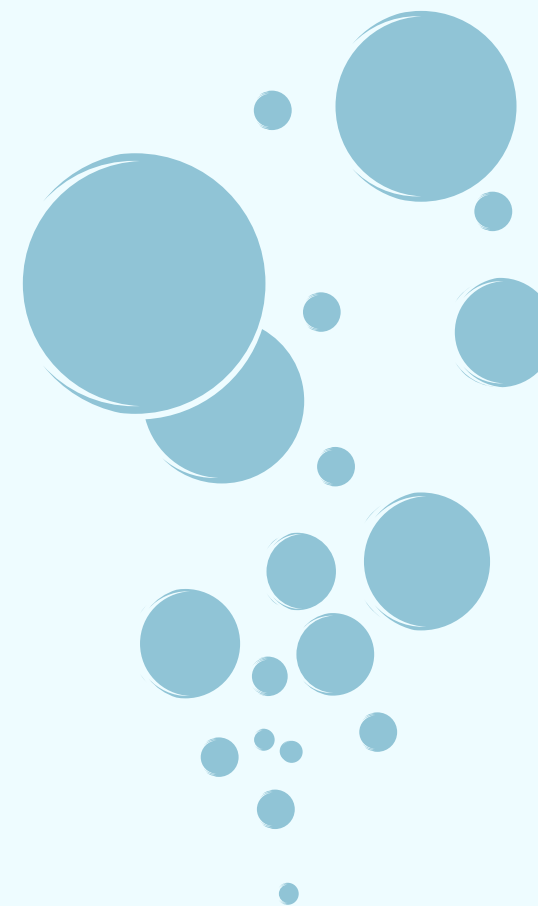
**T-SHIRTS ARE \$15
T-SHIRTS MUST BE WORN ON FIELD TRIPS AND
WALKING FIELD TRIPS. CAMPER WITH OUT T-
SHIRT WILL BE REQUIRED TO PURCHASE A NEW
SHIRT AT CAMP TO ATTEND FIELD TRIP.**

**T-SHIRTS WILL BE DISTRIBUTED AT
CAMP ON CAMPERS FIRST DAY. T-
SHIRTS CAN BE BOUGHT AND PICKED UP
AT CAMP.**



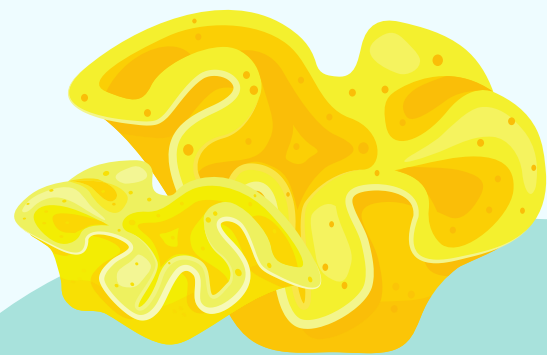


REGISTER FOR CAMP S.H.A.R.K
AT [THEYOUTHCENTER.ORG](https://www.theyouthcenter.org)



OR

[HTTPS://WWW.THEYOUTHCENTER.ORG/CAMP-S-H-A-R-K/](https://www.theyouthcenter.org/camp-s-h-a-r-k/)



An underwater-themed graphic with a dark blue, torn-edge shape containing the text. The background is light blue with scattered bubbles and green seaweed. Three blue and yellow striped fish are swimming in the upper right. The word "Questions?" is written in a white, cursive font. Below it, the phone number "CALL (562) 493-4043" is written in a white, bold, sans-serif font.

Questions?

CALL (562) 493-4043